

2022 Ford E350 Glaval Primetime 14 + Rear Luggage Passenger Shuttle Bus

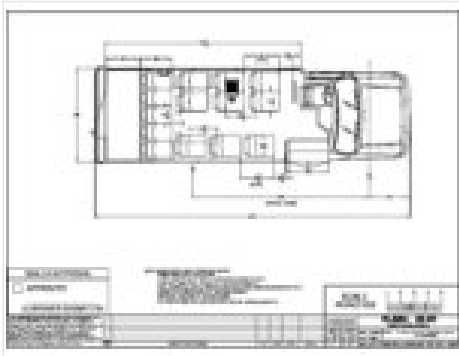


Call For Pricing

This 2022 Ford E350 Glaval Primetime 14 Passenger Shuttle Bus offers a max seating capacity of 14 and a current mileage of 0 miles. It comes with hydraulic brakes, gas engine, automatic transmission, white exterior, and a black interior with leathermate seats.

Vehicle Features

- Reclining Leathermate Seats
- Front and Rear Air Conditioning
- AM/FM Radio with CD
- Exterior Breakaway Mirrors
- Back Up Alarm
- Tinted Windows
- Dedicated Rear Luggage
- Arm Rest
- Front and Rear Heat
- Reading Lights
- Emergency Roadside Reflector Kit
- Back Up Camera
- 2 Emergency Pushout Windows
- Seat Belts
- Fire Extinguisher
- Heated Remote
- Tilt and Cruise
- Electric Entry Door
- Roof Hatch



Stock Number	GL21-123
Model Year	2022
Make	Ford
Body	Glaval
Model	E350 Primetime
Condition	New
Location	On Order
Wheelchair Accessible	No
Seating Capacity	14
Wheelchair Capacity	NA
Seating Capacity Range	0-15
Mileage	0
Brakes	Hydraulic
Fuel Type	Gas
Engine Size (L)	7.3
Transmission	Automatic
Exterior Color	White
Interior Color	Black
Seat Material	Leathermate
Luggage	Yes
CDL Requirement	No
Availability	Available Soon
Vehicle Categories	Commercial Buses, Shuttle Buses

NOTES
