

# 2022 Ford E350 Glaval Primetime 14 + Rear Luggage Passenger Shuttle Bus

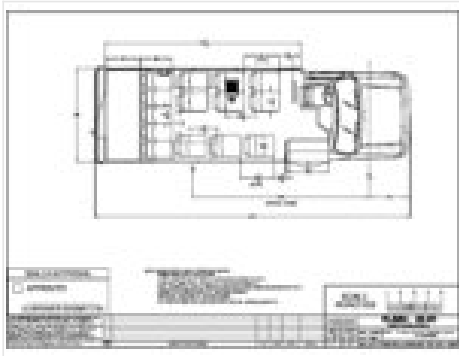


## Call For Pricing

This 2022 Ford E350 Glaval Primetime 14 Passenger Shuttle Bus offers a max seating capacity of 14 and a current mileage of 0 miles. It comes with hydraulic brakes, gas engine, automatic transmission, white exterior, and a black interior with leathermate seats.

## Vehicle Features

- Reclining Leathermate Seats
- Front and Rear Air Conditioning
- AM/FM Radio with CD
- Exterior Breakaway Mirrors
- Back Up Alarm
- Tinted Windows
- Dedicated Rear Luggage
- Arm Rest
- Front and Rear Heat
- Reading Lights
- Emergency Roadside Reflector Kit
- Back Up Camera
- 2 Emergency Pushout Windows
- Seat Belts
- Fire Extinguisher
- Heated Remote
- Tilt and Cruise
- Electric Entry Door
- Roof Hatch



<b>Stock Number</b>	GL21-136
<b>Model Year</b>	2022
<b>Make</b>	Ford
<b>Body</b>	Glaval
<b>Model</b>	E350 Primetime
<b>Condition</b>	New
<b>Location</b>	On Order
<b>Wheelchair Accessible</b>	No
<b>Seating Capacity</b>	14
<b>Wheelchair Capacity</b>	NA
<b>Seating Capacity Range</b>	0-15
<b>Mileage</b>	0
<b>Brakes</b>	Hydraulic
<b>Fuel Type</b>	Gas
<b>Engine Size (L)</b>	7.3
<b>Transmission</b>	Automatic
<b>Exterior Color</b>	White
<b>Interior Color</b>	Black
<b>Seat Material</b>	Leathermate
<b>Luggage</b>	Yes
<b>CDL Requirement</b>	No
<b>Availability</b>	Available Soon
<b>Vehicle Categories</b>	Commercial Buses, Shuttle Buses

**NOTES**

---

---

---

---

---