

2016 Ford E450 Goshen Impulse 25 Passenger Commercial Bus

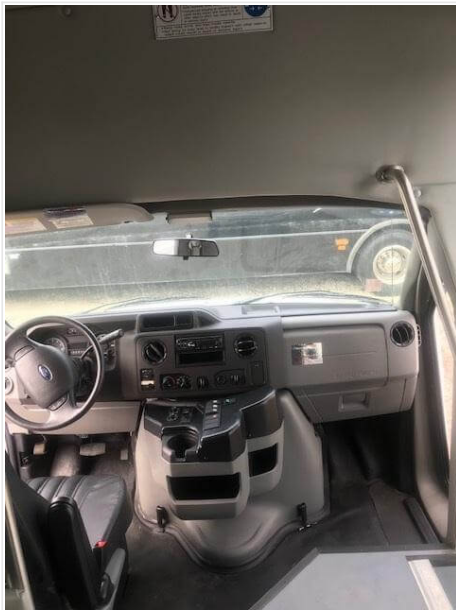


Call For Pricing

This 2016 Ford E450 Goshen Impulse 25 Passenger Commercial Bus offers a max seating capacity of 25 and a current mileage of 16895 miles. It comes with hydraulic brakes, gas engine, automatic transmission, white exterior, and a gray interior with leathermate seats.

Vehicle Features

- Reclining Leathermate Seats
- Front and Rear Air Conditioning
- Rear and Overhead Luggage
- Reading Lights
- Cruise Control
- LED Lights
- 4 Emergency Pushout Windows
- Side Sliders
- Front and Rear Heating
- AM/FM Radio with CD
- Dual Rear Wheels
- Heated Power Mirrors
- Gerflor Flooring
- Lap Seat Belts
- Dual Compressor
- TV and DVD
- Wheel Liners
- Electric Entry Door
- 1 Roof Hatch



Stock Number	19-257
Model Year	2016
Make	Ford
Body	E450 Goshen
Model	Impulse
Condition	Used
Location	Dallas
Wheelchair Accessible	No
Seating Capacity	25
Wheelchair Capacity	NA
Seating Capacity Range	16-25
Mileage	16895
Brakes	Hydraulic
Fuel Type	Gas
Engine Size (L)	6.8
Transmission	Automatic
Exterior Color	White
Interior Color	Gray
Seat Material	Leathermate
Luggage	Yes
CDL Requirement	Yes
Availability	Available Now
Vehicle Categories	Commercial Buses

NOTES
